

Maintain your air barrier at exterior lights and plugs.



- Envelope penetration for electrical is a 3/4" hole so it is easily sealed.
- Patented system diverts water from the housewrap to the exterior of the cladding.
- Available built-in rainscreen spacer works with 1/2" or 3/4" strapping.
- ETL tested to CSA/UL wet location standards.
- Removable Trim Plate adjustable to accomodate cladding thickness from 5/8" to 1 1/4".
- Saves time and labour with a three-in-one application.

Over Air Barrier ELECTRICAL MOUNTING BLOCKS



Only one
small hole
required for
the wire,
protecting
the integrity
of the
building
envelope.

**Install in
under FIVE
minutes!**



White Electrical Plug
Mounting Block with
Rain Screen Spacer
26160-01



White Electrical Light
Mounting Block with
Rain Screen Spacer
26460-01



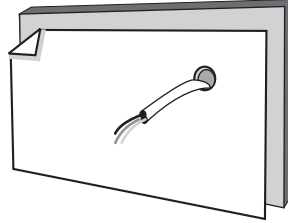
www.vsaent.com

OVER AIR BARRIER Installation Instructions (new construction)



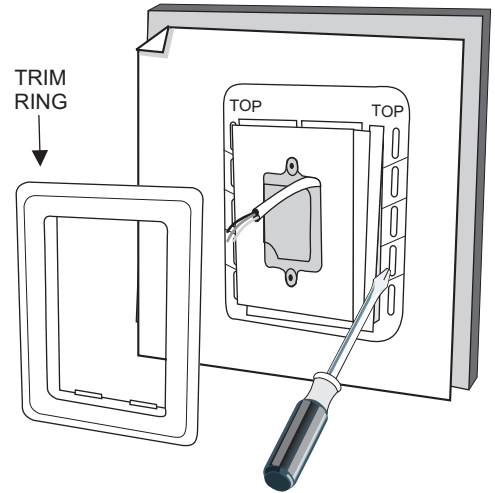
STEP 1

- Drill 3/4" hole through exterior wall sheeting.
- Install Exterior Air Barrier over wall sheeting.
- Extend electrical wire min. 8" through opening.
- Seal opening with self-adhesive membrane.



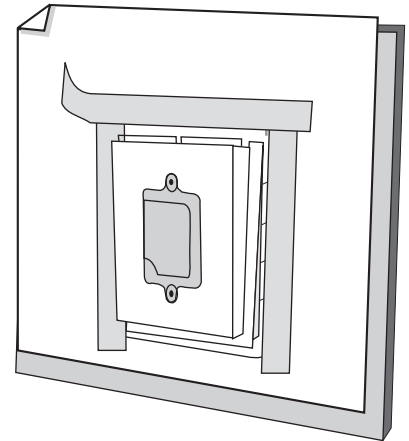
STEP 2

- Remove Trim Ring from self-flashing cover (flex slightly to disengage the Trim Ring).
- Pass electrical wire through cable restraint.
- Level and install Light Mount/Plug Mount using four #8 - 1 1/4" screws.



STEP 3

- Install Self-Adhesive Membrane over the nailing flange on right and left sides, then overlapping across the top.



STEP 4

- Once exterior finish (siding, stucco, brick, rock, etc.) is complete, install trim ring by simply snapping it into place.
- Reversible trim ring will accommodate 5/8", 3/4", 1" or 1 1/4" thickness.

