

Maintain your air barrier at exterior lights and plugs.

Fast. Simple. Consistent. Inexpensive.

- Envelope penetration for electrical is a 3/4" hole so it is easily sealed.
- Patented system diverts water from the back wall before it can penetrate the building envelope.
- Saves time and labour with a two-in-one application.
- Ideal for manufactured homes.



Over Air Barrier **ELECTRICAL MOUNTING BLOCKS**

**Only one
small hole
required for
the wire,
protecting
the integrity
of the building
envelope.**



Two designs available:

Electrical Plug Block
Part# 26158

Electrical Light Block
Part# 26458



Think OUTSIDE the box!

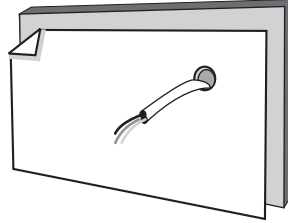
www.vsaent.com

OVER AIR BARRIER Installation Instructions (new construction)



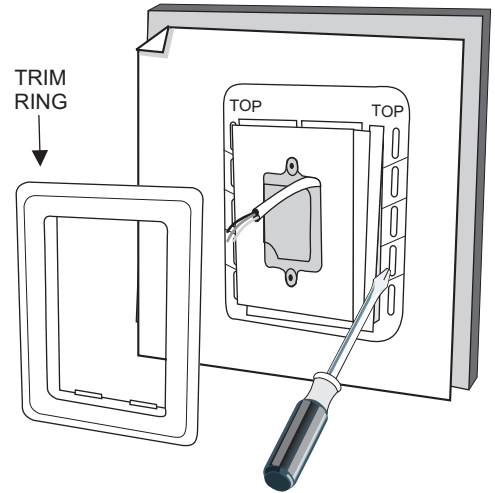
STEP 1

- Drill 3/4" hole through exterior wall sheeting.
- Install Exterior Air Barrier over wall sheeting.
- Extend electrical wire min. 8" through opening.
- Seal opening with self-adhesive membrane.



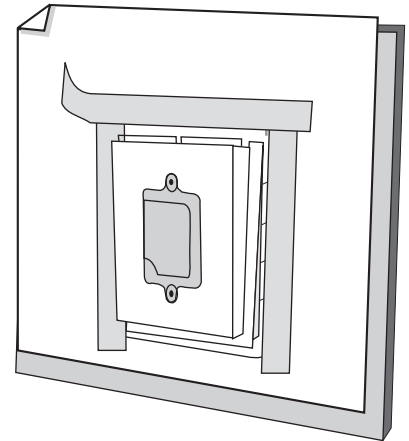
STEP 2

- Remove Trim Ring from self-flashing cover (flex slightly to disengage the Trim Ring).
- Pass electrical wire through cable restraint.
- Level and install Light Mount/Plug Mount using four #8 - 1 1/4" screws.



STEP 3

- Install Self-Adhesive Membrane over the nailing flange on right and left sides, then overlapping across the top.



STEP 4

- Once exterior finish (siding, stucco, brick, rock, etc.) is complete, install trim ring by simply snapping it into place.
- Reversible trim ring will accommodate 5/8", 3/4", 1" or 1 1/4" thickness.

