



*Enterprises Inc.*

# product catalogue



## **SELF-FLASHING EXTERIOR WALL ACCESSORIES**

**THIRD WAVE**   
**technology**

Featuring the THIRD WAVE (rain screen) series of siding accessories.

## **ELECTRICAL BOX OVER AIR BARRIER**



Featuring Over Air Barrier (OAB) Technology electrical mounting blocks.

## **ORIGINAL DESIGN SERIES**

Featuring QBP's original series of two-piece mounting blocks and ventilation products.

## **VINYL HANDRAIL COVER**

Featuring Netcan International's patented design.

**VSA Enterprises Inc.**  
207 - 20701 Langley Bypass  
Langley, BC, Canada V3A 5E8  
**Tel: (604) 534-9752**  
**Toll-free: 1-877-830-1609**

**[www.vsaent.com](http://www.vsaent.com)**



# A leader since 1987, we know **EXTERIOR BUILDING PRODUCTS.**



"VSA is a Canadian company, with manufacturing in North America and distribution throughout the world."

"VSA's Third Wave product stands alone. It's amazing how well it works to redirect water from penetrating the exterior envelope."—Bryce Davies, GM, Insul-Twin Systems Ltd.

"Third Wave Series of products demonstrate greatly improved water shedding performance over standard siding accessories."—Dave Fookes, PEng., Project Engineer, Morrison Hershfield Limited

## **VSA Enterprises: A Leader Since 1987**

VSA Enterprises Inc., and its predecessor Quicksilver Building Products, was founded in 1987. Our focus was and still is designing and producing innovative construction materials made of durable, modern plastic.

Addressing the need for light and plug mounting plates, installed originally with vinyl siding, these products have since become a standard installation practice in North America. This VSA product line now includes a full line of vents to suit nearly every application for the exterior of the modern residential home.

**[www.vsaent.com](http://www.vsaent.com)**

## "THIRD WAVE" Rain Screen Series of Siding Accessories

The **Third Wave** (rain screen) series of siding accessories addresses the need of the multiple siding exterior applications used in today's residential homes. **Third Wave Technology** features engraved rain channels that incorporate the principal of surface tension. Water, as it cascades down the surface of the wall, is diverted to each side, down the engraved rain channels, and out over the exterior finish by means of the bottom rain flange.

### Rain Screen Technology

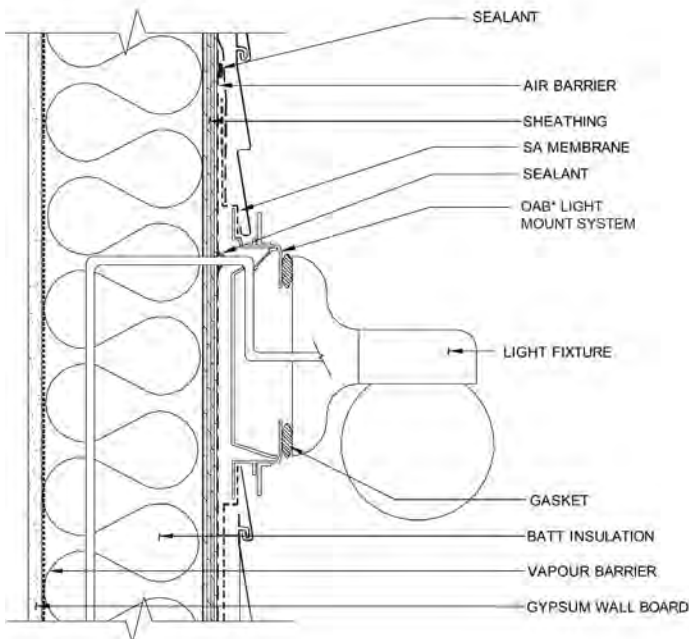
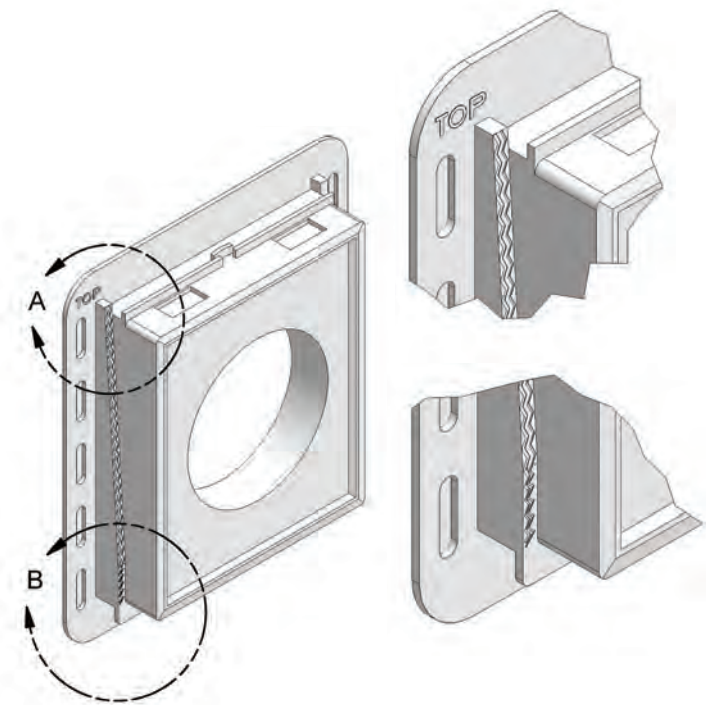
Laboratory tests show the **Third Wave Technology** products outperform every other siding accessory on the market. In the W-3 Water Wall test applications, **Third Wave** products eliminated or greatly reduced water penetration, even at 10 US gallons per hour, without the addition of peel and stick, caulking or building paper as recommended in exterior wall applications.

### UV Protected Material

VSA products are constructed of UV-protected, virgin polypropylene which is known for its durability in both hot and cold climates. The product remains pliable and color-fast for many years.

### Reversible Trim for Multiple Cladding Systems

There are no unnecessary openings in the nailing flange. The snap-over trim ring fits over the solid base without compromising any openings. It is adjustable, by reversible means, to accommodate 5/8", 3/4", 1" and 1 1/4" (1.59cm to 3.18cm) finished wall thickness for a variety of exterior cladding types. The removable trim rings allow for future maintenance checks.



#### OAB\* Light Mount System

United States Patent No. 5,664,375 and 7,358,440.

Additional U.S. and Canadian patents pending.

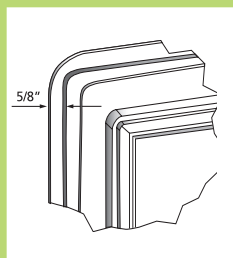
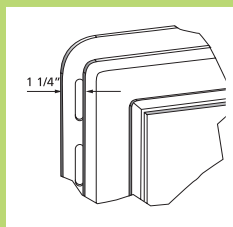
\*Over Air Barrier technology

**THIRD WAVE**  
**technology**

Visit our website for downloadable specs and diagrams of the Third Wave Series at [www.vsaent.com](http://www.vsaent.com).



**Reversible trim ring models:**



Adjusts to 5/8", 3/4",  
1" & 1 1/4" thickness.

**CONTACT DEALER  
FOR COLORS.**



**Flush Plug**

21158-01 White  
Flush electrical outlet.



**Recessed Plug**

21258-01 White  
Electrical outlet.



**Light Mount**

21458-01 SQ White  
4" round opening.  
Light fixture mount.



**Surface Mount**

21558-01 White  
1/4" hole for easy  
application of lights  
and mounting utility  
accessories.



**3 x 5 Mount**

21358-01 White  
Flush face. Available with  
closed face or variety of  
holes to suit any round  
protrusion to 2 1/2".



**Recessed Split Water**

21758-01 White  
Removable split face  
or electrical outlet.



**5 x 6 Mount**

21658-01 White  
Universal mount.  
Customized openings  
to 5" round.



**OAB  
Electrical Plug**

26158-01 White



**OAB  
Electrical Light**

26458-01 White

# Exterior building products that offer superb moisture protection



## The Problem

### Water intrusion into the building envelope

- Conventional wall applications are not sufficient.
- Rain water seeps behind a light fixture, saturating the wall.
- Unable to dry, the sheathing and the structure rots.
- Mould causes health issues.
- Exterior repairs are costly and time consuming.

## The Solution

### Self-flashing OAB\* electrical mounting blocks

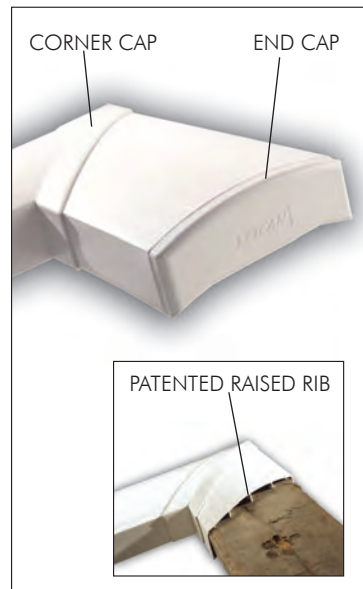


- OAB\* electrical box fits inside the Third Wave mounting block.
- Patented rain channels and bottom drip cap divert water from the back wall before it can penetrate the building envelope.
- Eliminates the need to cut into the building envelope with anything larger than the size of the electrical wire.
- Protects the integrity of the building envelope.
- Saves time and labour with a two-in-one application.

\* Over Air Barrier technology

## handrail covers and more

"Thank you, thank you, thank you! You have just saved my summers from having to scrape, sand, fill and triple-coat my wooden deck Railings. I have better things to do...."—R. Smith, Homeowner



### Netcan Vinyl Handrail Cover

Patented design. Available in two sizes: 2" x 4" and 2" x 6". Accessories: 90 degree corners, end caps, expansion sleeves, 2" x 6" plant holders and PVC solvent cement.



# Gable Vents

"As a specification consultant to architects, I have recommended and specified the VSA product line of siding products. I am confident in both their design and quality. In fact, I have used them on my own home."

—Robert Park, Spectrite

Technical Services

## Octagon Gable Vents

22" Vent – 626060-00 White  
18" Vent – 626058-00 White  
Net Free Area: 58 Sq. In.



## Round Gable Vents

22" Vent – 626055-00 White  
18" Vent – 626053-00 White  
Net Free Area: 58 Sq. In.



## Half Moon Vents

22" x 34" Vent – 626095-00 White  
18" x 30" Vent – 626093-00 White  
Net Free Area: 111 Sq. In.



## Square Gable Vents

12" x 12" Vent – 626043-00 White  
18" x 18" Vent – 626045-00 White  
Net Free Area: 44 Sq. in.



## Cathedral Vents

22" x 28" Vent – 626110-00 White  
Net Free Area: 107 Sq. In.



## Rectangle Gable Vents

12" x 18" Vent – 626075-00 White (44 Sq. In.)  
18" x 24" Vent – 626080-00 White (44 Sq. In.)  
22" x 28" Vent – 626120-00 White (74 Sq. In.)



## Key Stone Blocks

641080-00 White





# Original Design Series

Original two-piece siding accessories with removable face plate for easy installation of exterior membrane. Face plate accepts finished application while creating a "J" channel.

## mounting plates



**Plug Plate #101**  
Flush Electrical  
Plate



**Split Recessed Plug  
Water Plate #5001**

Three part application. Back plate can be split to fit around existing protrusions. Face plate splits to fit water taps or electrical outlets.



**Light Plate #201,  
4" Round Opening**

Contractors choice for mounting light fixtures.



**4" x 6" Utility  
Plate #101F  
Mounting Plate**

Available with 1/2", 5/8", 3/4", 1", 1 1/4", 1 1/2" and 2 1/2" holes. Suitable for water taps, exhaust, gas and electrical lines.



**7" x 7" Utility Plate  
(ULP) #201F**

Available with 3 - 5/8" holes. Suitable for mounting custom openings up to 5" diameter.



**Surface Series Block**

641060-00 White  
Add a light or install in new construction. Adapts to double 4, 5, 6, 8, 10" triple 3" and dutch lap siding.

## ventilation



**6" Wall Vent #301**

Make-up air vent.  
Net Free Area: 19.5 Sq. In.



**6" Wall Vent & 6" Attached Adapter Collar #1331  
4" & 5" Adapter Collar #6010-1**

Suitable for make-up air for gas fired appliances.



**4" Dryer Vent #1201 (vent only)  
Four-pack with 4" Exhaust Pipe #1441**

**3" Dryer Vent #1301 (vent only)  
Four-pack with 3" Exhaust Pipe #1341**

Face plate is removable to accommodate renovation dryer vent replacement and two part new construction exhaust vent. No cross louvers to obstruct the flow of exhaust or lint. Ideal for dryer vent or wall application bathroom exhaust.  
Net Free Area: 12 Sq. In.



**Basement Vent #401**

16" x 9", Open and close.  
Surface mounting wall vent. Ideal as a siding or stucco application.  
Net Free Area: 36.6 Sq. In.



**4" Soffit Vent #601**

4" Optional Screen #604S  
Ideal for venting bathroom exhaust.  
1" back collar for easy 4" pipe connection.  
One piece vent.  
Net Free Area: 6.38 Sq. In.



**Screened Plastic Mini Louvers (PML)**

1", 1 1/2", 2", 2 1/2", 3", 4", 5" & 6"  
Available in 1" white #PML 101 or dark brown #PML 104.  
Perfect for venting any area, both interior and exterior.  
Drill the required opening and pressure fit the vent into it. Ideal for everything from cabinets to Soffit Ventilation. One piece vent.





**VSA Enterprises Inc.**  
207 - 20701 Langley Bypass,  
Langley, BC, Canada V3A 5E8

**Tel: (604) 534-9752  
or 1-877-830-1609**

**Fax: (604) 534-9754  
or 1-877-827-9931**

**THIRD WAVE**  
**technology** 

PRINTED IN CANADA

**[www.vsaent.com](http://www.vsaent.com)**